

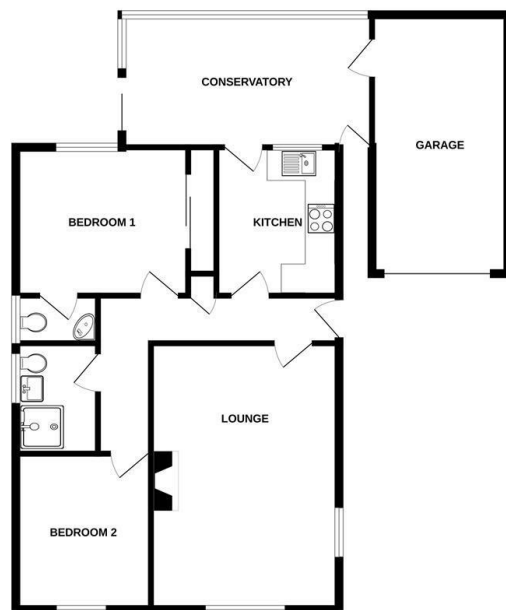


## 43 Prince Charles Way, Seaton, EX12 2TU

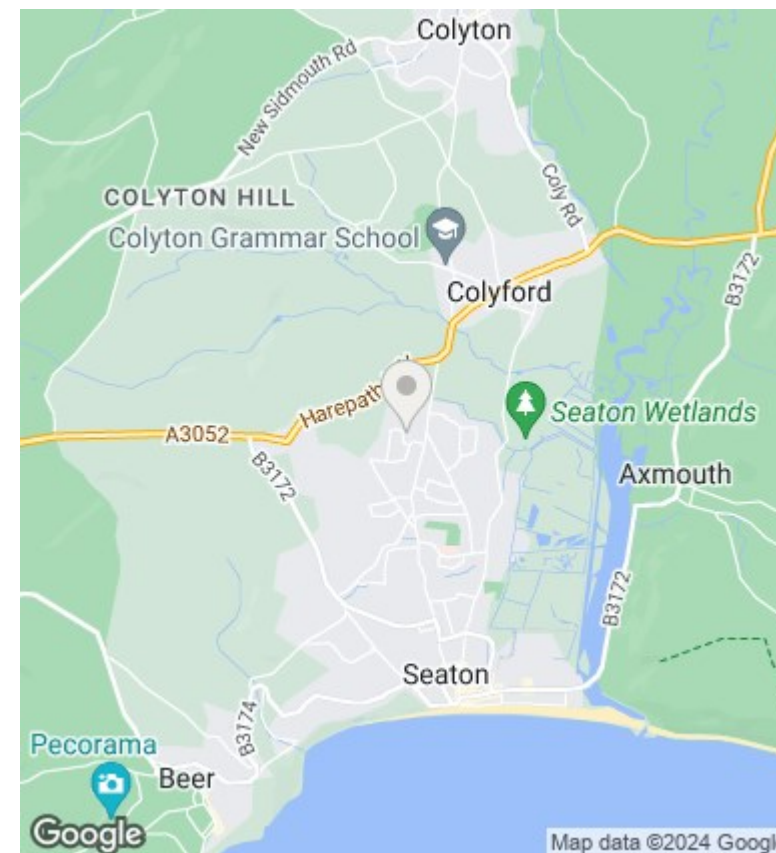
£300,000 Freehold

- Two Bedroom Detached Bungalow
- Conservatory
- Views of the Axe Valley
- Lounge
- Shower Room
- Rear Garden
- Kitchen
- Master Bedroom with Ensuite WC
- Garage and Driveway Parking

GROUND FLOOR  
968 sq.ft. (89.9 sq.m.) approx.



TOTAL FLOOR AREA: 968 sq.ft. (89.9 sq.m.) approx.  
Whilst every attempt has been made to ensure the accuracy of the floorplan contained here, measurements of doors, windows, rooms and any other items are approximate and no responsibility is taken for any error, omission or misstatement. This plan is for guidance purposes only and should be used as such by any prospective purchaser. The services, systems and appliances shown have not been tested and no guarantee as to their operability or efficiency can be given.  
Made with Metropix 12/2018



## Directions

## Viewings

Viewings by arrangement only. Call 01297 24022 to make an appointment.

## Council Tax Band

## EPC Rating:

D

Energy Efficiency Rating		
	Current	Potential
Very energy efficient - lower running costs		
(92 plus) <b>A</b>		
(81-91) <b>B</b>		
(69-80) <b>C</b>		
(55-68) <b>D</b>	64	
(39-54) <b>E</b>		
(21-38) <b>F</b>		
(1-20) <b>G</b>		
Not energy efficient - higher running costs		
<b>England &amp; Wales</b>	EU Directive 2002/91/EC	